

A fiscal response in two phases

Figure 1 Change in public expenditure between 2007 – 2009

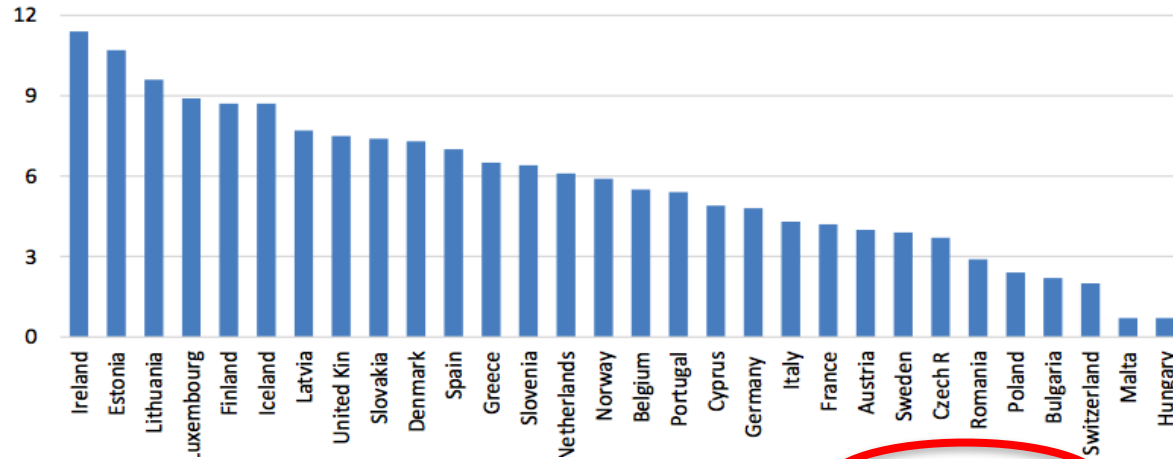
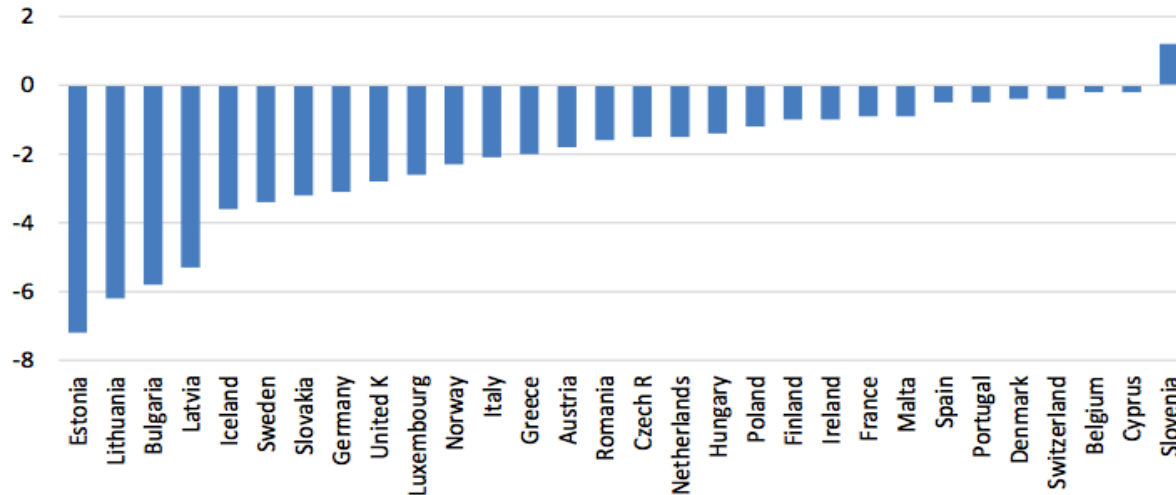


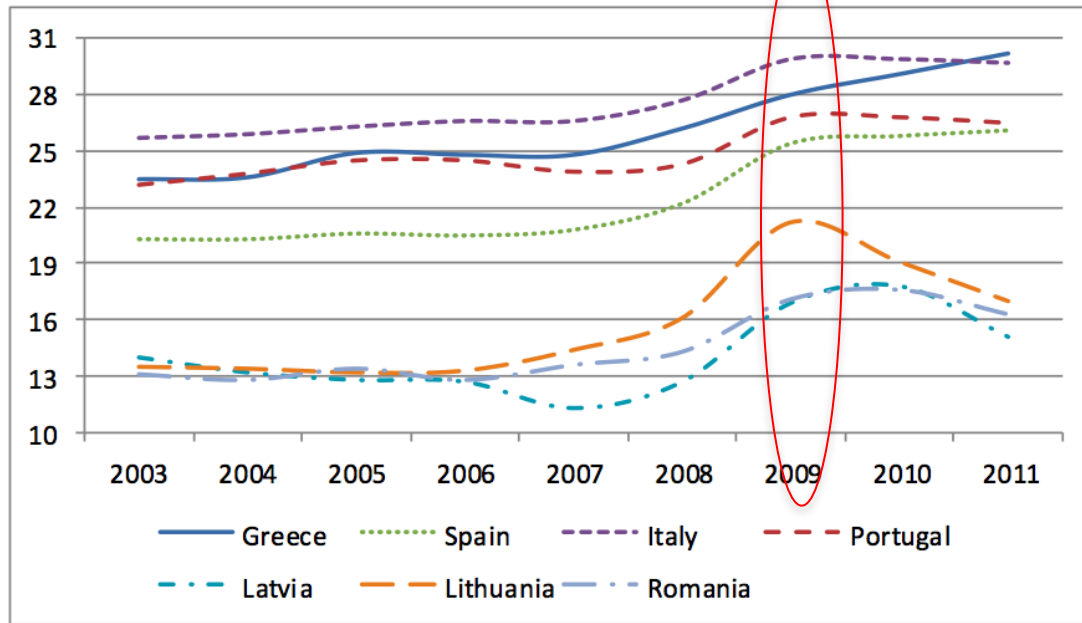
Figure 3. Change in public expenditure between 2009 and 2011



Source: EUROSTAT

A fiscal response in two phases

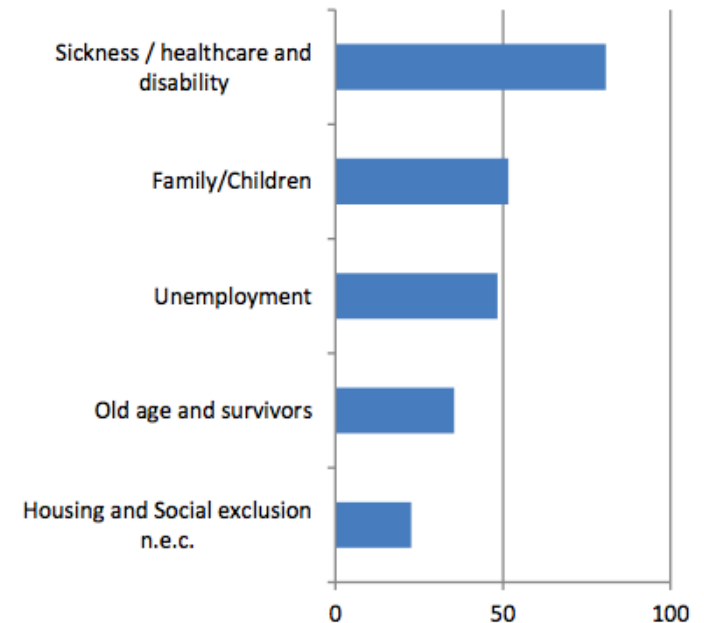
FIGURE 3. SOCIAL PROTECTION EXPENDITURE AS % OF GDP (2003-2011)



Note: Social protection expenditure as percentage of GDP.

Source: Expenditure: main results [spr_exp_sum]. Last update 24 January 2014. Extracted on 5 February 2014

Figure 5. Percentage of countries that considered less than priority the different kind of social expenditures

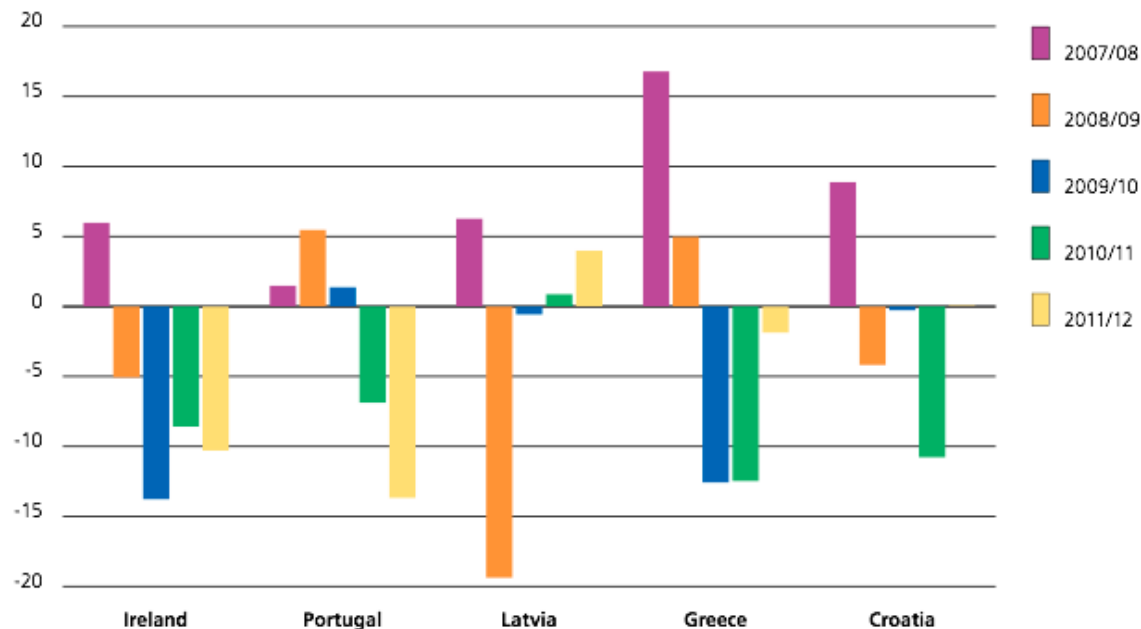


The health case - Response

Spending and public funding

Figure 3

Annual change (%) in per capita public spending on health (NCUs), 2007–2012, European Region countries in which the 2012 level was lower than the 2007 level in absolute terms

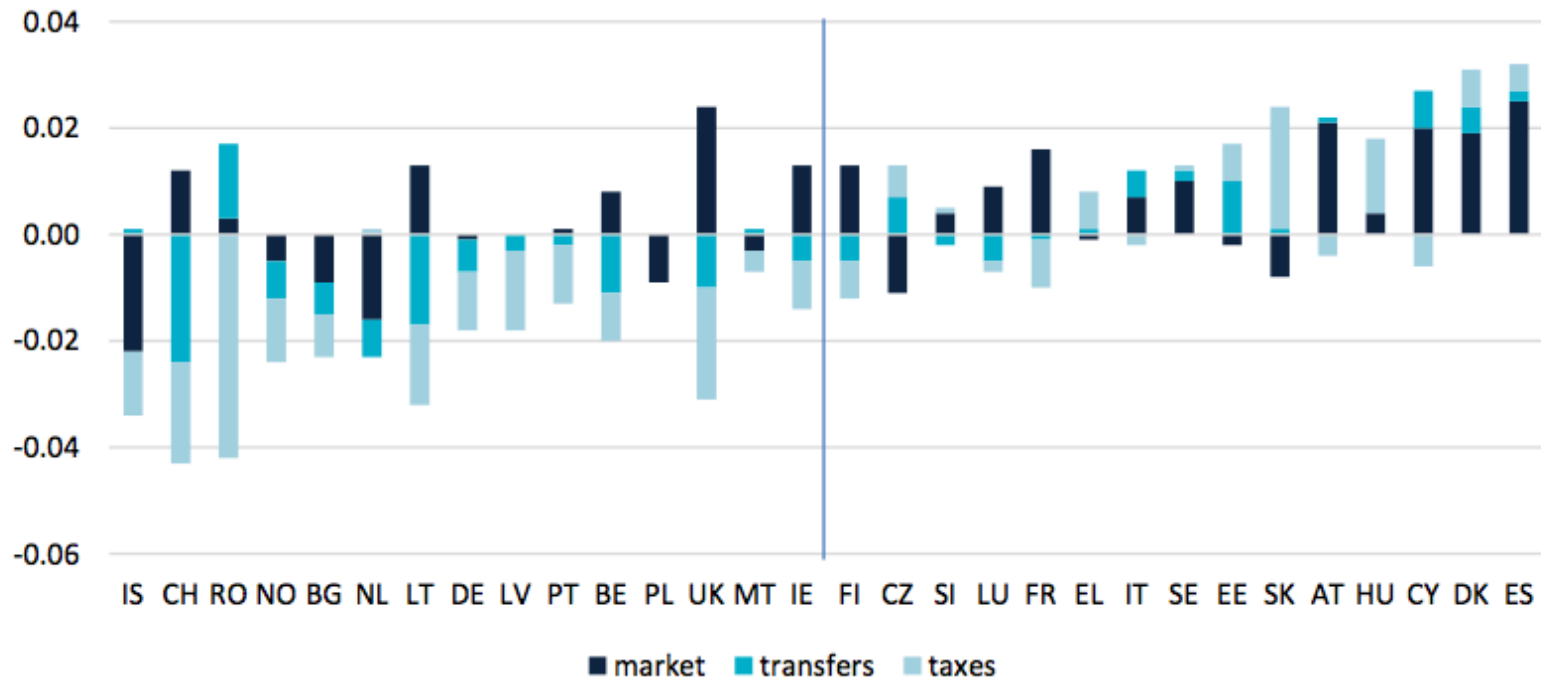


Source: Thomson et al. (2014) based on WHO (2014).

Could it have been different?

Equity

Figure 8. Contribution of income components to Gini index changes in 30 European countries over the period 2008 –2012



Source: Author's calculations based on EU SILC data.
 Notes: For Belgium and Ireland data refer to the period 2008 – 2011.